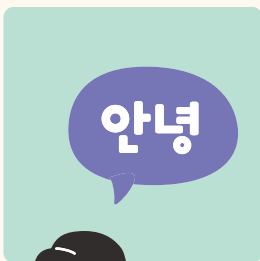




We meet friends from across the world at school!



International Joint Class



서울특별시교육청
SEOUL METROPOLITAN OFFICE OF EDUCATION

[illegible]

As of May, 2024

Countries Participating in International Joint Class

A world map highlighting countries that participate in the International Joint Class. Each country is marked with a blue circle containing a white number representing the count of schools. The countries and their respective school counts are: Japan (79), Taiwan (31), Greece (20), France (18), Australia (15), Malaysia (14), Singapore (5), Vietnam (1), Philippines (2), Sri Lanka (1), Thailand (7), India (9), Hong Kong (2), Mongolia (2), Bulgaria (2), Ukraine (1), Slovenia (1), the U.K. (1), Ireland (2), Denmark (1), Germany (7), Serbia (9), Albania (1), Kuwait (1), and Chile (1). A red location pin is also shown for Korea.

Country	No. of Schools
Japan	79
Taiwan	31
Greece	20
France	18
Australia	15
Malaysia	14
Singapore	5
Vietnam	1
Philippines	2
Sri Lanka	1
Thailand	7
India	9
Hong Kong	2
Mongolia	2
Bulgaria	2
Ukraine	1
Slovenia	1
the U.K.	1
Ireland	2
Denmark	1
Germany	7
Serbia	9
Albania	1
Kuwait	1
Chile	1



Participating Schools in Korea

As of May, 2024

Category	No. of Schools
Elementary School	52
Middle School	63
High School	145
Miscellaneous School	1
Total	261

Ready to go global with your dreams
in international joint class?



The whole world as one online in International Joint Class



What is International Joint Class?

Schools in Seoul and abroad interact through remote classes on an online platform to allow students to learn other languages and cultures and get to know friends from various backgrounds.

Purpose

Cultural and emotional exchanges
to strengthen global competency and build friendship

Class Management

After matching a Seoul-based school to a school abroad,
the two schools will discuss class details.

Category	Real-Time Remote Class		Non-Real-Time Remote Class
	Speaking Mother Tongue	Speaking in the counterpart country's language	
Class Platform	Zoom etc.		Padlet, Classroom, Jamboard, etc.
Participating Countries	Countries with little time difference from Korea (Japan, New Zealand, Australia, China, etc.)		Countries with greater time differences from Korea (The U.S., European countries, etc.)
Languages Used	As students wish (Mother tongue, counterpart country's language, English, etc. as agreed with the counterpart)		
Class Management	Classes conducted based on the discussion between the teachers from the two sides on class topics, schedule, etc. ※ Class topics and manual will be provided		
Others	Interpretation/translation programs for virtual meetings can be used if necessary. (https://ijclass.sen.go.kr/)		

What is the Interpretation / Translation Video Conferencing Program?



This program translates what you say in your mother tongue into the counterpart country's language, helping students with little foreign language skills participate in class without stress.

Supported languages: Korean, English, Japanese, Chinese, Russian

Process for International Joint Class



Office of Education | School Tie-up Procedure

1

Demand survey
(December–February)

- Collection of International Joint Class applications from schools in Korea and abroad

2

School tie-up
(March–November)

- Factoring in language, grade, quota, time, etc.

3

Notification of the tie-up result
(December–February)

- Provide both tie-up schools with the counterpart's information



School | Class Procedure

1

Prior Consultation

- Discussion on class schedule, topic, etc. between the teachers from tie-up schools

2

Roll call

- Access the platform and check attendance

3

Class time

- Brief self-introduction followed by the lecture and activities
- Help from remote class assistants (optional)

4

Overseeing class activities

- Check on group rooms and encourage student participation

5

Class wrap up

- Return to the main screen and wrap-up

+

Non-real-time exchanges
(optional)

- Share feedback and thoughts on the class
- Interactions through “culture boxes”, letter writing, social media, e-mail, etc.

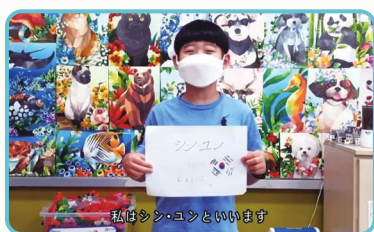
Who are remote class assistants?

Volunteer language assistants for study who provide interpretation/translation for a smooth running of International Joint Class and assist with class activities.



Examples

What are possible topics for the class?



Self-introduction in the counterpart country's language



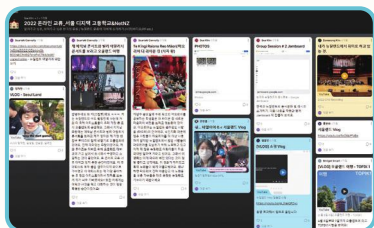
Exchanges during class through small group activities



Korea-New Zealand high school students' International Joint Class on Use of Coding



Introduction of traditional musical instruments by special class students in Korea and Japan



Sharing daily routines (Vlog)



Exchanging "culture boxes" and handwritten letters



Introduction Video



International Joint Class Guiding Materials



Operation Manual




Seoul Metropolitan Office of Education

Vision


Innovative future education
based on coexistence with blooming diversity

Organization


As of Oct.1, 2023



School
2,133



Student
850,712



Faculty
81,081

- Kindergarten 764
- Elementary school 608
- Middle school 390
- High school 321
- Special school 32
- Miscellaneous school 18

School System

Grade	Pre-school	1	2	3	4	5	6	1	2	3	1	2	3
School Level	Kindergarten	Elementary School						Middle School			High School		
								Miscellaneous School					
	Special School												
Age	Six and under	7	8	9	10	11	12	13	14	15	16	17	18

Semesters

	Mar.	Apr.	May	Jun.	Jul.	Aug.	Sep.	Oct.	Nov.	Dec.	Jan.	Feb.
Semester	1st Semester											
							2nd Semester					
Vaca- tion					Summer						Winter · Spring	



International Joint Class

How to Sign Up

- ◆ Submit Application for International Joint Class

<https://ijclass.sen.go.kr/application>



- ◆ Inquiry to the International Affairs Team at the Seoul Metropolitan Office of Education

☎ Phone number +82-02-2282-8667~8

✉ E-mail intaffairs@sen.go.kr



서울특별시교육청
SEOUL METROPOLITAN OFFICE OF EDUCATION

Address | 48, Songwol-gil, Jongno-gu, Seoul (2-77, Sinmunno 2(i)-ga)
Website | <https://www.sen.go.kr>